

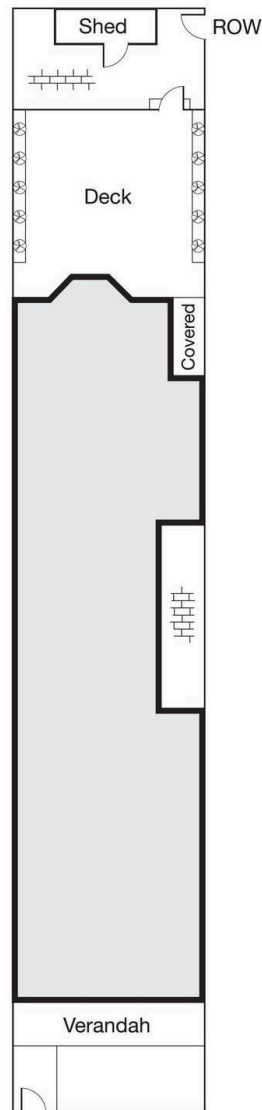
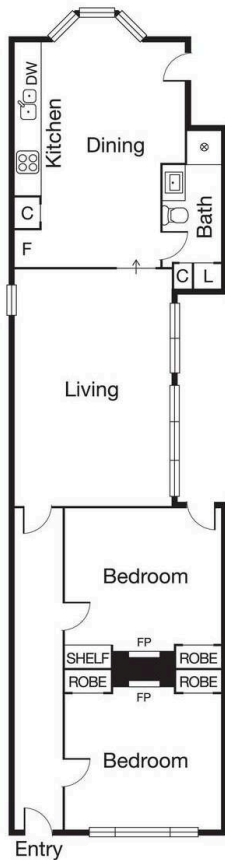
ALBERT PARK 21 O'Grady Street



CAYZER

ALBERT PARK 21 O'Grady Street

21 O'GRADY STREET,
ALBERT PARK



VICTORIAN IN HEART OF ALBERT PARK VILLAGE

- Allotment size: 170sqm approx.
- Moments' walk from all that Albert Park has to offer
- Unbeatable quiet and central location

This delightful Victorian cottage is in superb order throughout and comprises two double bedrooms, large central living room with feature garden lightwell, kitchen incorporating dining area with fully glazed aspect onto decking at rear with storage and pedestrian access. Bathroom and separate laundry.

With desirable period elements including wonderful original timber floors, this immaculate home has been freshly repainted and is ready to move in and enjoy immediately.

🏠 2 🏠 1

AUCTION Saturday 6th February at 12:00pm

Inspection As advertised or by appointment

Contact Michael Szulc 0417 122 809
Simon Carruthers 0438 811 601

Mel Ref 57 E4



CAYZER

Albert Park 330 Montague Street 03 9699 5999
Port Melbourne 370 Bay Street 03 9646 0812

cayzer.com.au